

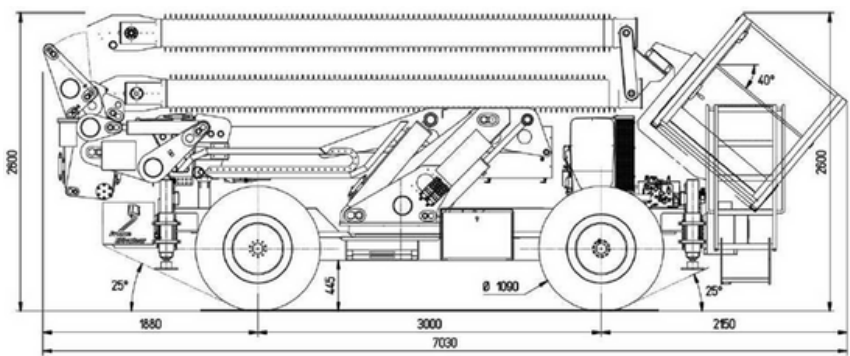


MOBILE ELEVATING WORK PLATFORM

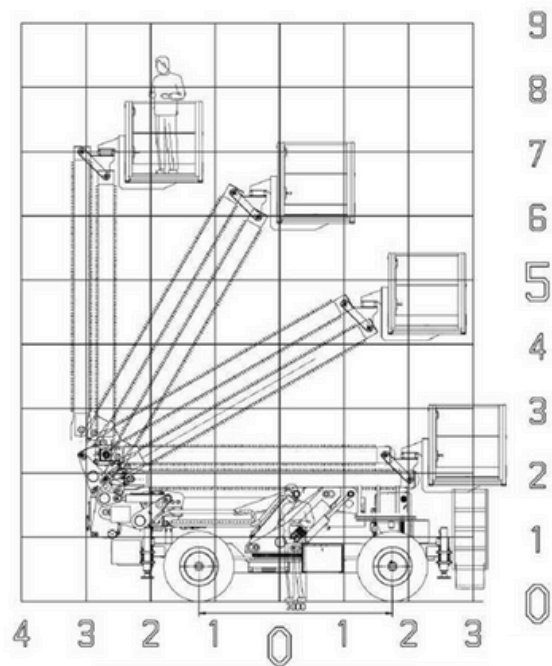
> PERFORMANCES

Maximum load capacity	320 kg / 2 workers
Non extended platform size	1500 mm x 1220 mm x 1220 mm
Extended platform size	2200 mm x 1220 mm x 1220 mm
Working position vehicle size	6640 mm x 2440 mm x 3060 mm
Working height	16 m
Vehicle weight	9150 kg approx

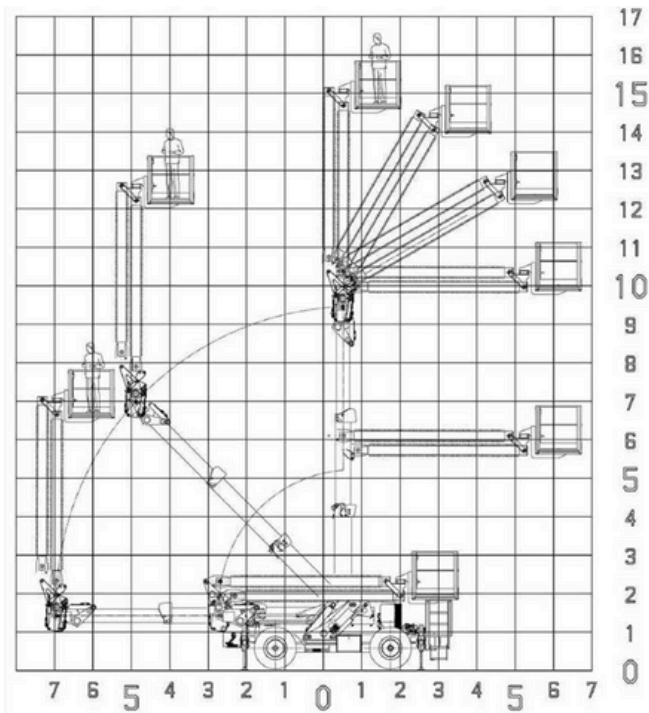
- Insulated boom constituted by a fiber glass tube covered with an envelope of silicone
- Fibre optic communication
- Safety ensured by Earthing
- Can be use in substation and overhead line
- RTE use it from 63 to 400 kV with Barehand Method



WORKING DIAGRAM IN METERS



Without outriggers



With outriggers

STANDARDS

- EN 280
- IEC 61057-2017

BENEFITS

- Improve external dielectric qualities under rain
- Compact
- Can be use with and without outriggers
- Two operating modes: diesel and electric

